

San Pedro's Waterfront Connectivity Plan

Community Workshop



swa

February 23, 2023

TODAY'S AGENDA

6:00-6:30 Introductory presentation by the Port of Los Angeles & SWA

- a. Update on current happenings
- b. Introduction to Connectivity Plan

Raffle

6:30-7:50 Exploring Connectivity: feedback activities

1. Participant Survey
2. Current Happenings at the LA Waterfront
3. How Do You Get to the Waterfront?
4. What Do You Like About the Waterfront Now?
5. What Would You Like to Do at the Waterfront in the Future?

**WE WANT TO
HEAR FROM
YOU!!**

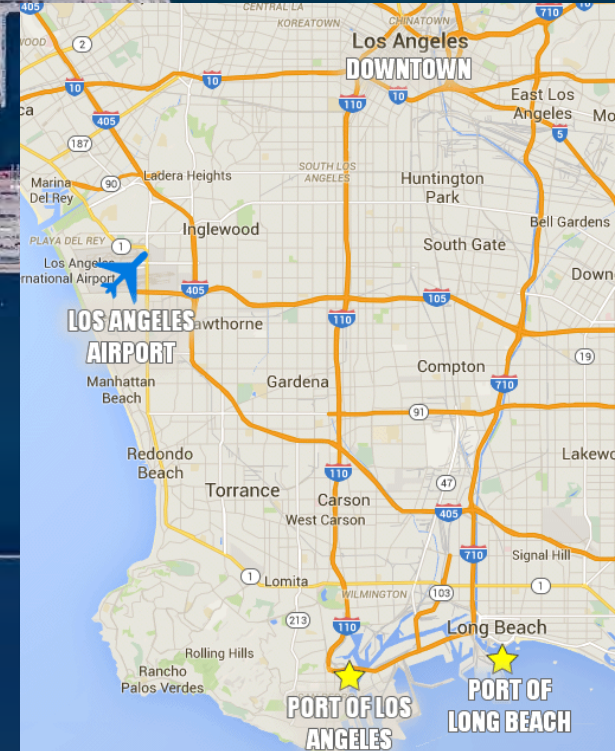
Raffle (at 7:15)

7:50-8:00 Closing remarks

Final Raffle

Current Happenings at the LA Waterfront

San Pedro Bay Port Complex



Port of Los Angeles at a Glance



- Founded in 1907
- State Tidelands Trust
- Non-Taxpayer Supported
- Business Port Model
- 5-Member Board of Commissioners
- 7, 500 Acres Port Property
 - 4,300 Acres Land (1,740 hectares)
 - 3,200 Acres Water (1,295 hectares)
 - 43 Miles of Waterfront
 - -53 Foot Main Channel Water Depth
- 270 Berths and 25 Cargo Terminals
 - 7 Container Terminals
 - 83 Ship-to-Shore Gantry Cranes
- 116 Miles of Rail Tracks
 - 5 On-Dock Railyards & 1 Classification Yard

LA Waterfront Overview



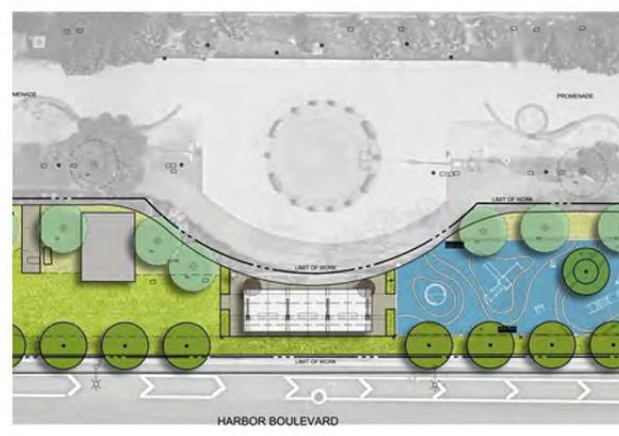
- 400 + acres of waterfront
- 15 marinas
- 3,736 recreational vessel slips and dry docks
- 25 miles from Downtown
- 1 hr. boat ride to Catalina Island
- 2 million visitors a year
- 500,000+ passengers on 100+ cruise ships/year
- ~100 public events/year - including LA Fleet Week





LA Waterfront San Pedro District





Public Access Projects



Battleship U.S.S. Iowa



West Harbor



AltaSea



Cabrillo Way Marina



Introducing the San Pedro Waterfront Connectivity Plan

PROJECT TEAM



Gerdo Aquino
Co-CEO
Urban Designer, Vision



Ying-yu Hung
Managing Principal
Principal-in-Charge,
Lead Landscape Architect



Jana Wehby
Associate Principal
Project Manager,
Urban Design & Planning



Val Clarke
Associate
Documentation Lead,
Urban Design & Planning



Yanhao Chai
Designer
Documentation,
Urban Design & Planning

Sam Zneimer
Sr. Project Manager
Transportation Planning



Kelly Lei
Planner
Bicycle & Pedestrian
Planning

CONNECTIVITY PLAN TIMELINE



CONNECTIVITY PLAN TIMELINE



**SEE US AT THE FIRST THURSDAY ARTWALK
NEXT WEEK!
MARCH 2ND, 6-8 PM - 6TH & MESA STREETS**

SAN PEDRO WATERFRONT HISTORY AT A GLANCE



PROJECT VISION

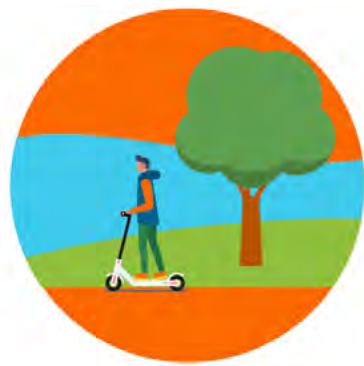
Now more than ever, people are seeking a reconnection with themselves, each other, and the natural environment around them. The San Pedro Waterfront Connectivity Plan is the catalyst that will allow this to happen.

The primary objective of this plan will build on existing and proposed modes of mobility as foundational to creating a network of well-connected, multi-benefit spaces that are accessible and safe for all San Pedro neighborhoods and the larger region seeking to enjoy an authentic L.A. Waterfront.

KEY COMPONENTS OF THE CONNECTIVITY PLAN



Transportation
Planning



Bicycle & Pedestrian
Planning



Public Art Planning



Open Space Planning



Best Practices

San Pedro's Waterfront Connectivity Plan Elements

- Motorized Connectivity
- Non-Motorized Connectivity
- Public Art
- Water Connectivity
- Wayfinding
- Open Space

Implementation Recommendations

Short Term (Next 5 Years) Long Term (Beyond 5 Years)



A Connected Waterfront!

PROJECT GOALS

Work with what's been done already

PROJECT GOALS

Work with what's been done already

Set a framework for the future

PROJECT GOALS

Work with what's been done already

Set a framework for the future

Think about connectivity comprehensively

PROJECT GOALS

Work with what's been done already

Set a framework for the future

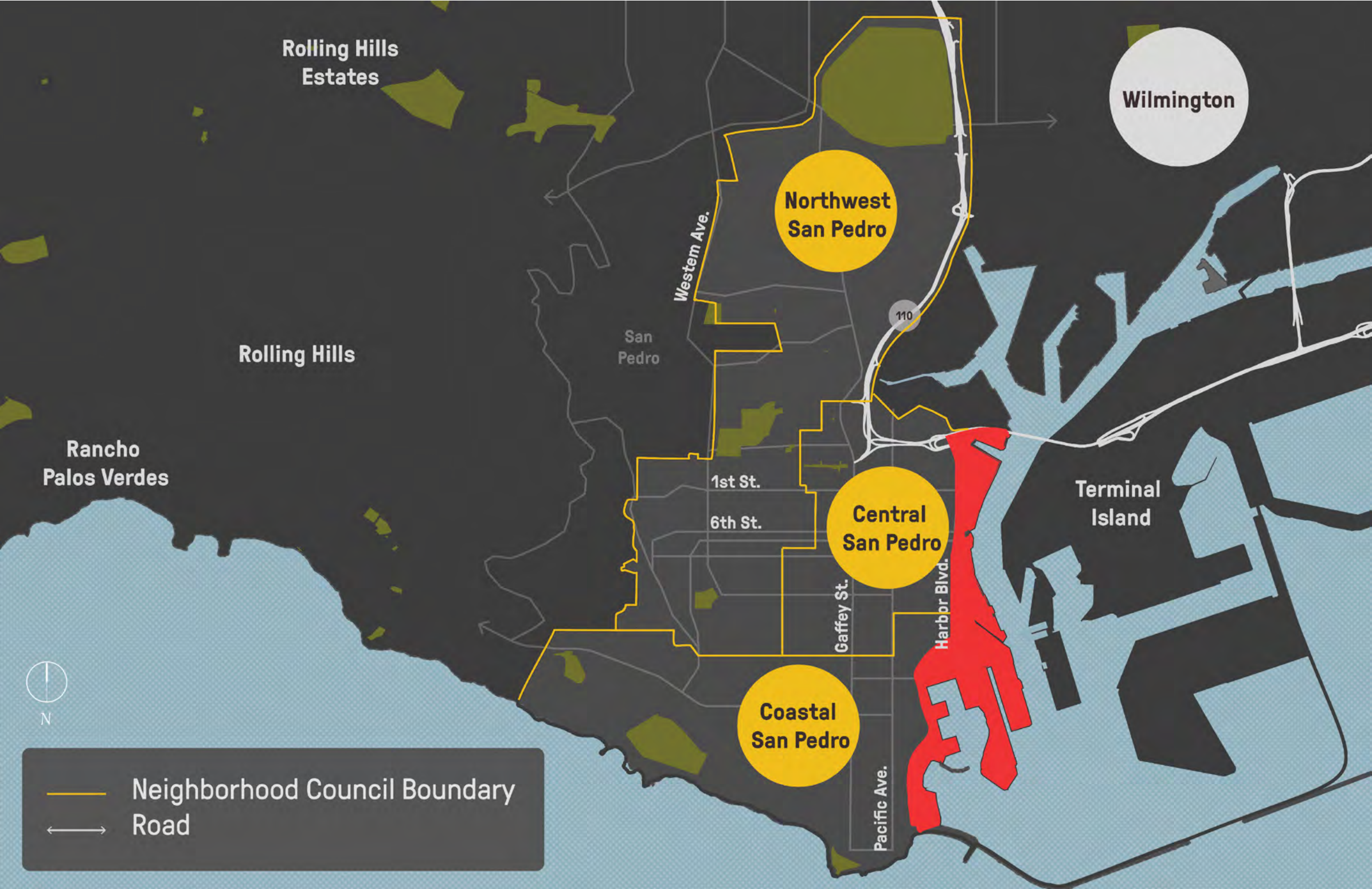
Think about connectivity comprehensively

Be engaging

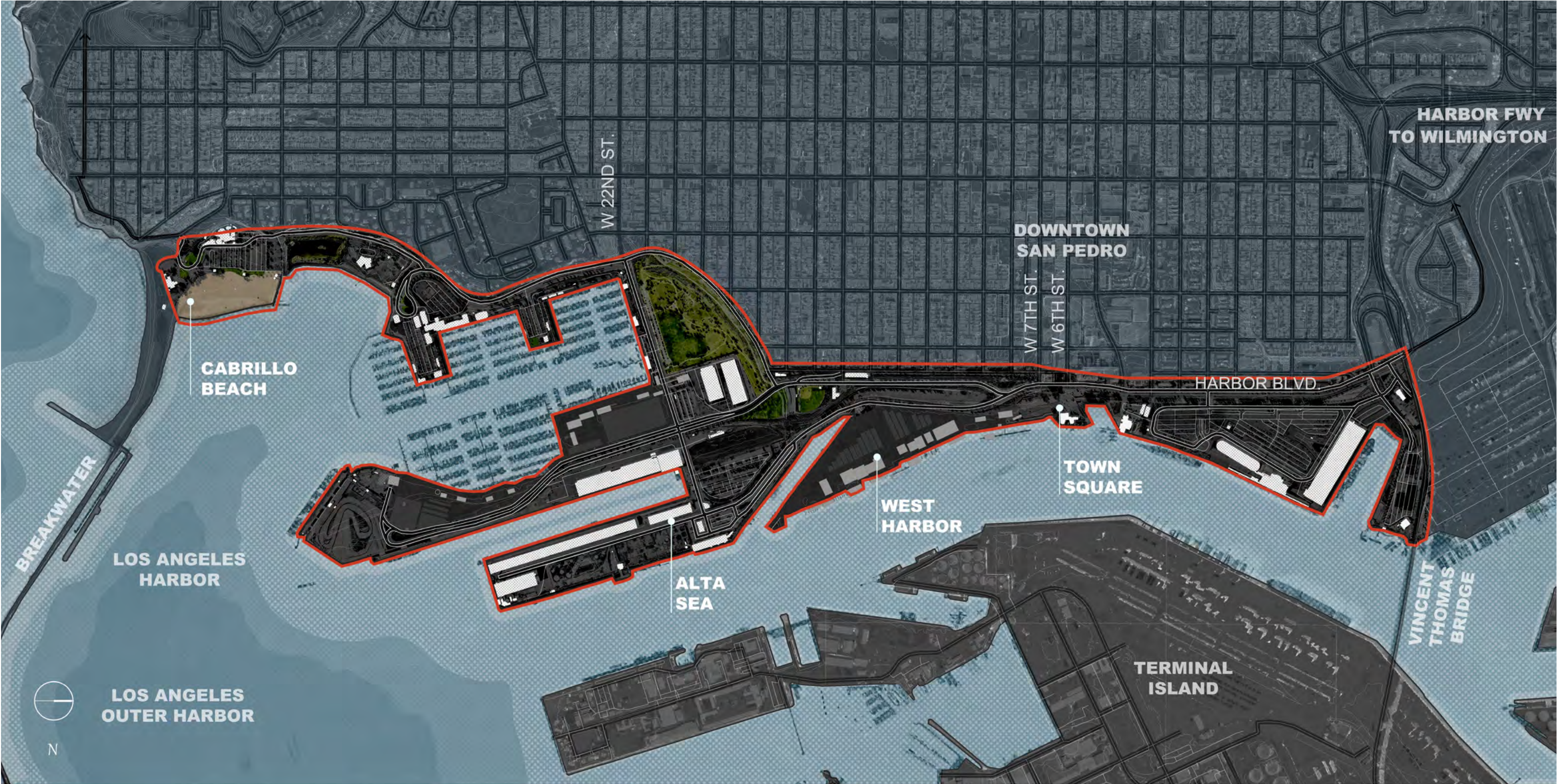
REGIONAL CONTEXT



COMMUNITY CONTEXT

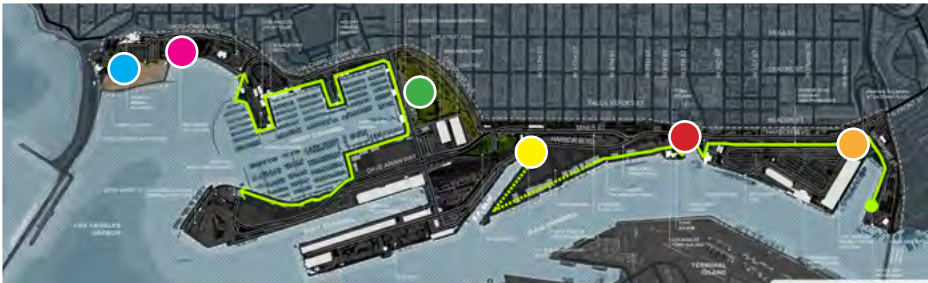


SCOPE AREA: 460 ACRES & 8 MILES OF WATERFRONT



Existing Conditions Overview

WHAT WE SEE TODAY: OPEN SPACE & ATTRACTIONS



● Downtown Harbor



● Fanfare Fountains at Gateway Plaza



● S.P. Slip Waterfront Plaza



● 22nd Street Park

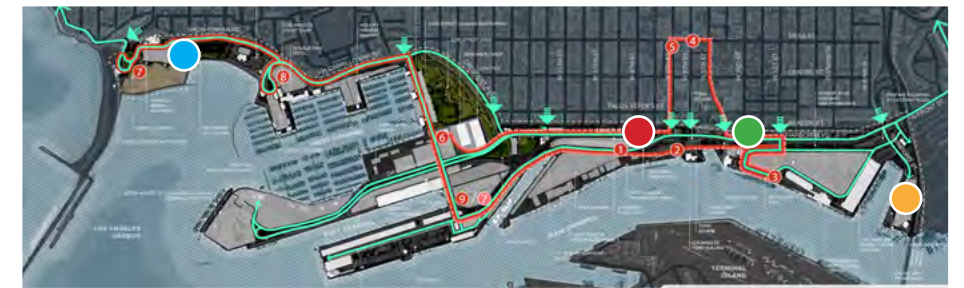


● Cabrillo Beach



● San Pedro Salt Marsh

WHAT WE SEE TODAY: ROADWAYS, PARKING, & TRANSIT



● Miner Street & Harbor Boulevard



● Parking at Catalina Express terminal



Rubber Tire Trolley



● Harbor Boulevard

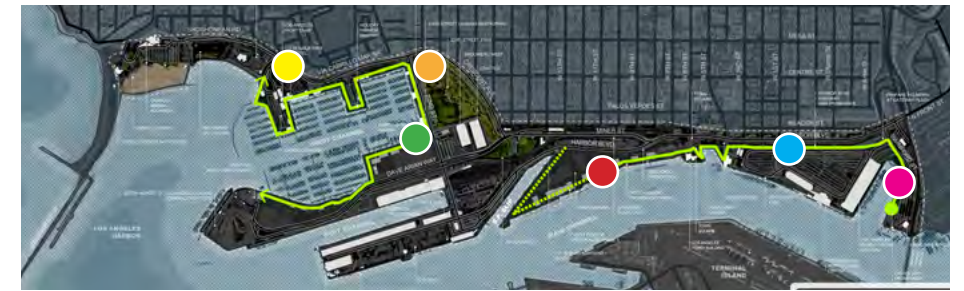


● Boat trailer parking, Cabrillo Beach



Metro J Line (Silver)

WHAT WE SEE TODAY: PROMENADES, SIDEWALKS, & BIKEWAYS



● Waterfront Promenade at West Harbor



● Cruise Ship Promenade



Sidewalk on Shoshonean Road



● Waterfront Promenade at 22nd St Landing



● Harbor Boulevard Parkway Promenade



● Bike trail at 22nd Street Park

WHAT WE SEE TODAY: PUBLIC ART, WAYFINDING, & AMENITIES



S.P. Slip Waterfront Plaza



Vehicular Signage



Los Angeles World Cruise Center Promenade



John S. Gibson Jr. Park



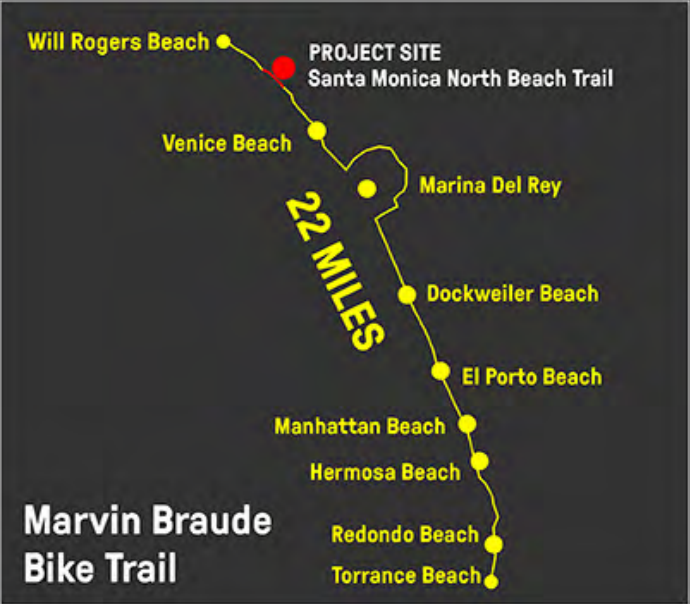
Pedestrian Signage



Los Angeles World Cruise Center

Inspirational Benchmarks

SANTA MONICA NORTH BEACH TRAIL | SANTA MONICA, CA



SANTA MONICA NORTH BEACH TRAIL | SANTA MONICA, CA





HUNTER'S POINT SOUTH | QUEENS, NY

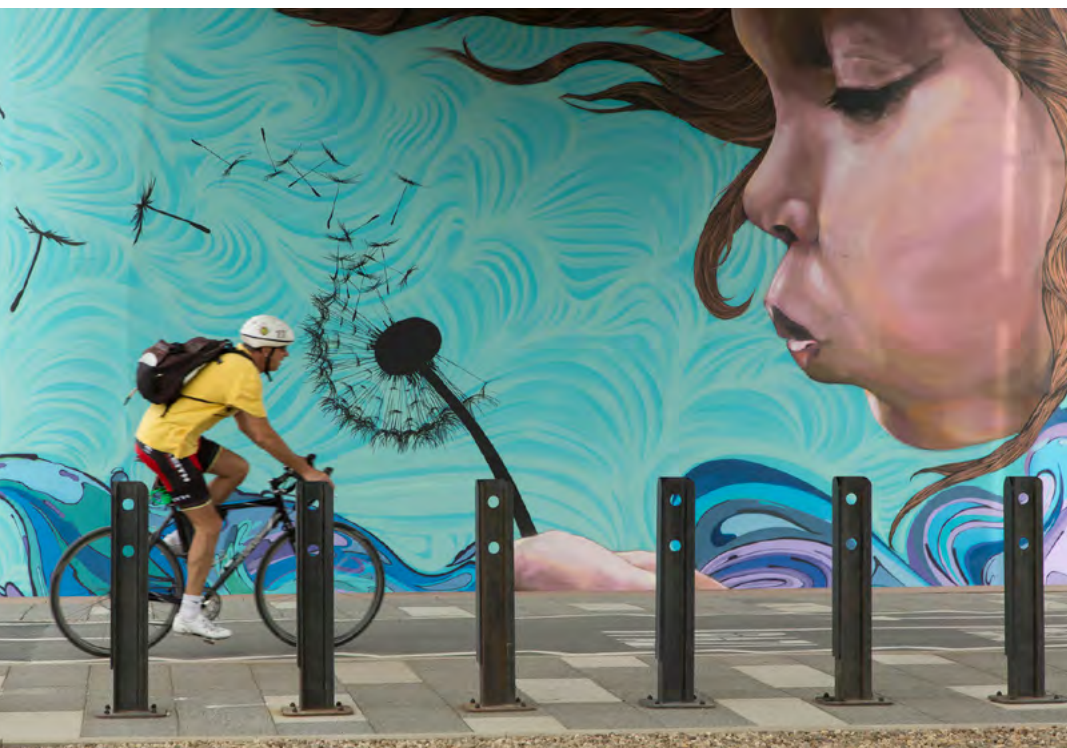


HUNTER'S POINT SOUTH | QUEENS, NY

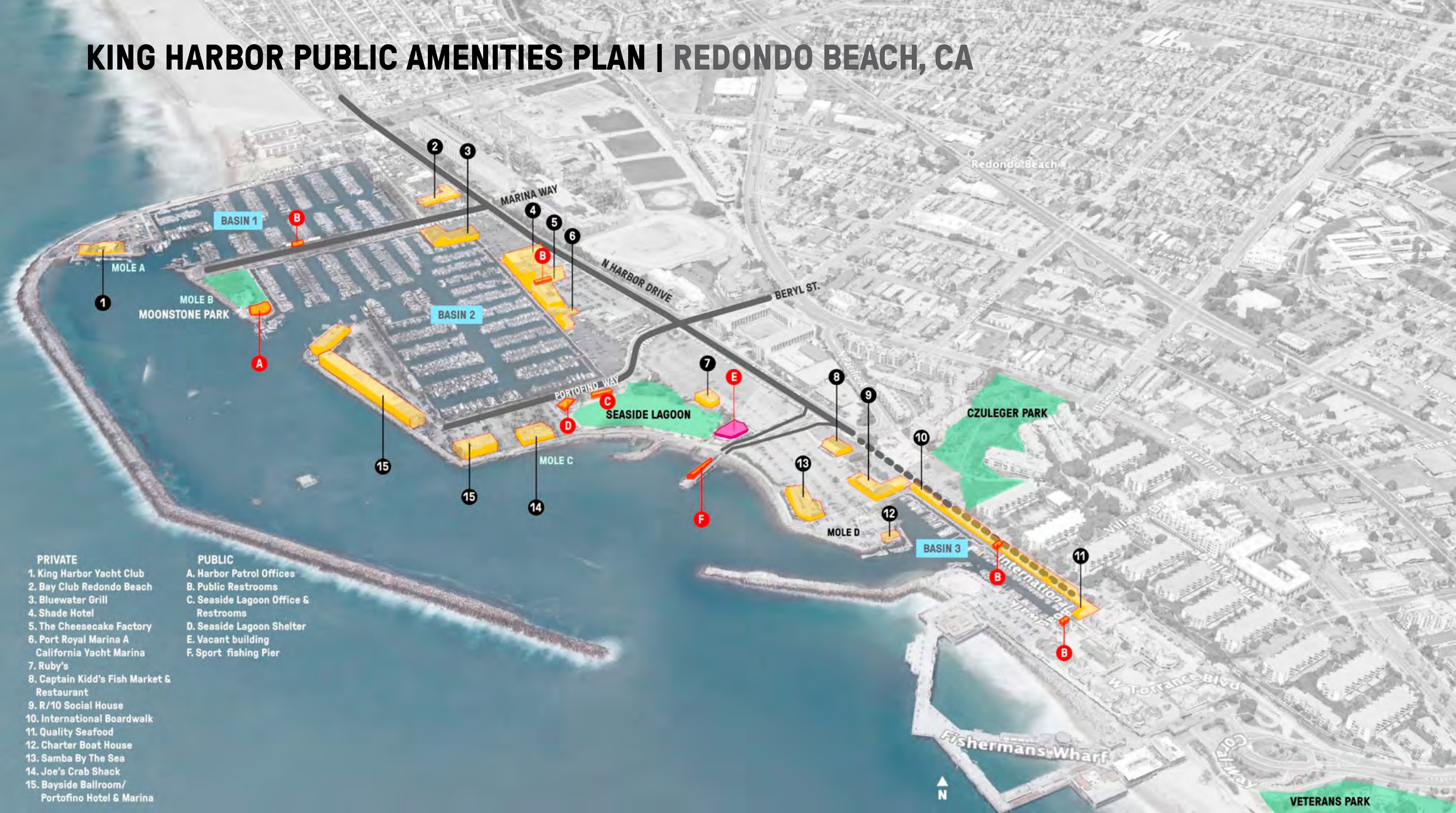


SAVA PROMENADA | BELGRADE, SERBIA





KING HARBOR PUBLIC AMENITIES PLAN | REDONDO BEACH, CA



KING HARBOR PUBLIC AMENITIES PLAN | REDONDO BEACH, CA



**WE WANT TO
HEAR FROM
YOU!!**

Exploring Connectivity: Feedback Activities

Five Stations

Visit at your own pace, any order (1 hr 20 minutes total)

Gather as a group for final 10 minutes (conclude by 8pm)

STATION 1

Participant Survey

Tell us more about you and your ideas

STATION 1: Participant Survey

Please answer the questions below to help us better understand who you are.
Please return the sheet when you are complete.

If you would like to receive updates about San Pedro's Waterfront Connectivity Plan, please share your name and email address:

ID Number

1. What are your primary languages spoken at home? Please list:

2. What is your age bracket?

a. 0 - 15 years old

b. 16 - 21 years old

c. 22 - 35 years old

d. 36 - 62 years old

e. 63+

f. Prefer not to answer

3. Which best describes your relationship to the LA Waterfront? Select all that apply:

a. I'm a local resident

b. I work here

c. I own a property or business here

d. I'm a visitor

e. Other, please list

4. What is your primary reason for visiting San Pedro's waterfront? Please list:

5. What neighborhood do you live in?

a. I live in San Pedro. Please list your nearest intersection:

b. I live outside San Pedro, in another Los Angeles neighborhood. Please list:

c. I live outside Los Angeles. Please list your city:

6. How often do you visit San Pedro's waterfront?

a. Every day, or close to it

b. Multiple times per week

c. Once a week

d. Several times a month

e. Once a month

f. Several times a year

g. Once a year

h. I've never visited

7. Who do you usually visit with? Select all that apply:

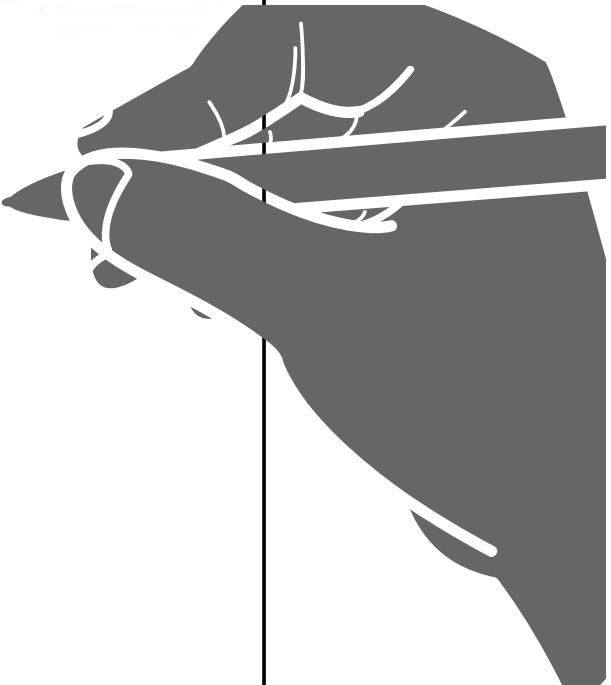
a. Family, adults

b. Family, children

c. Friends

d. Co-workers

e. Myself



Please turn in your survey before going to the other stations

STATION 2

Current Happenings

Learn about current developments at San Pedro’s waterfront

STEP 1:

Ask questions to learn about San Pedro’s waterfront & the connectivity plan.

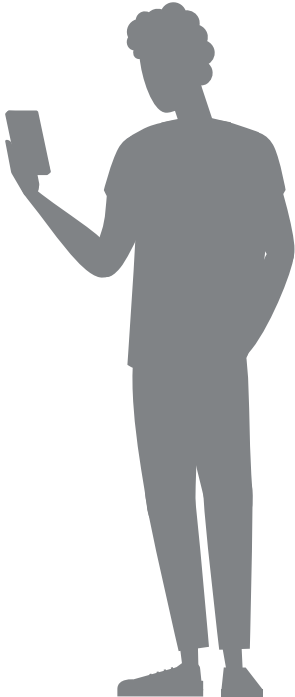


STEP 2:

Visit our website or scan the QR code below.



www.lawaterfront.org



Visit stations 2-5 at your own pace, any order

STATION 3

How Do You Get to the Waterfront?

Map your past and current experiences

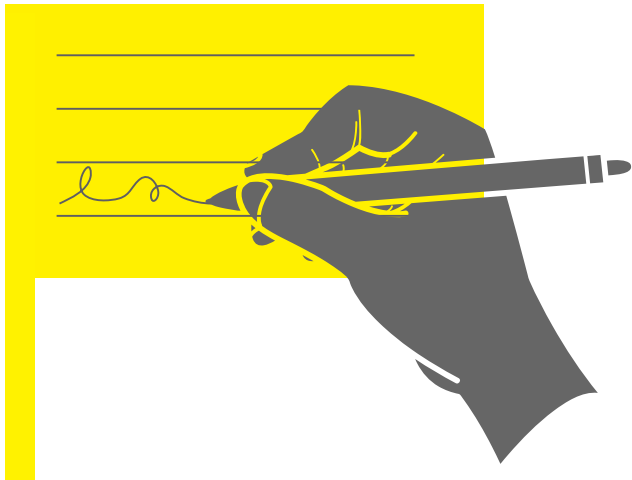
STEP 1:

Fill out survey to show your route & modes of transportation



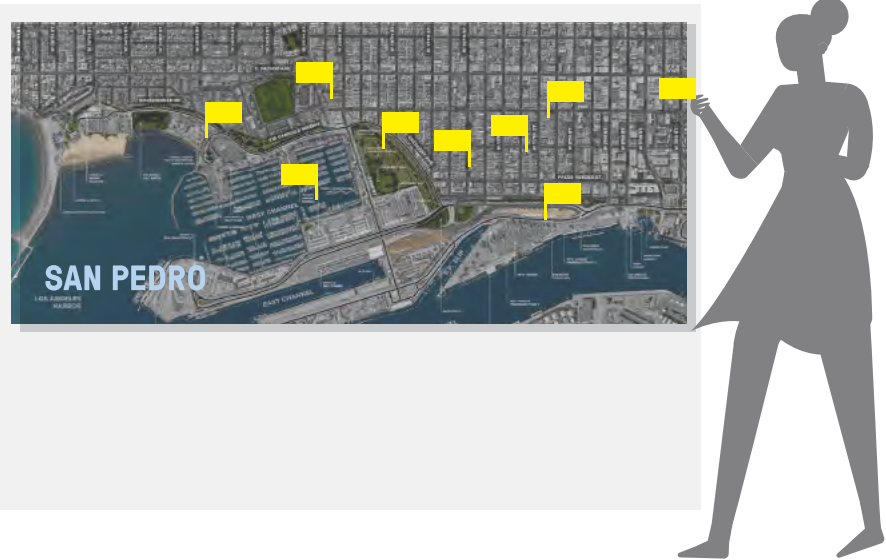
STEP 2:

Write comments about your waterfront experiences (challenges and things that are good)



STEP 3:

Pin your comment to the related location in the waterfront or adjacent neighborhoods



Visit stations 2-5 at your own pace, any order

STATION 4

What Do You Like About the Waterfront Now?

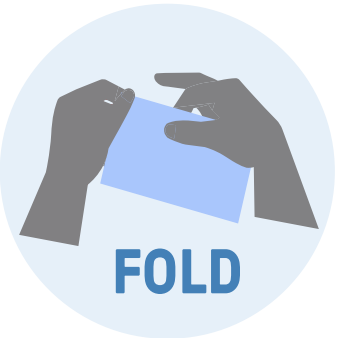
Build memorable experiences, from your perspective

Inspiration:
Shipping Containers



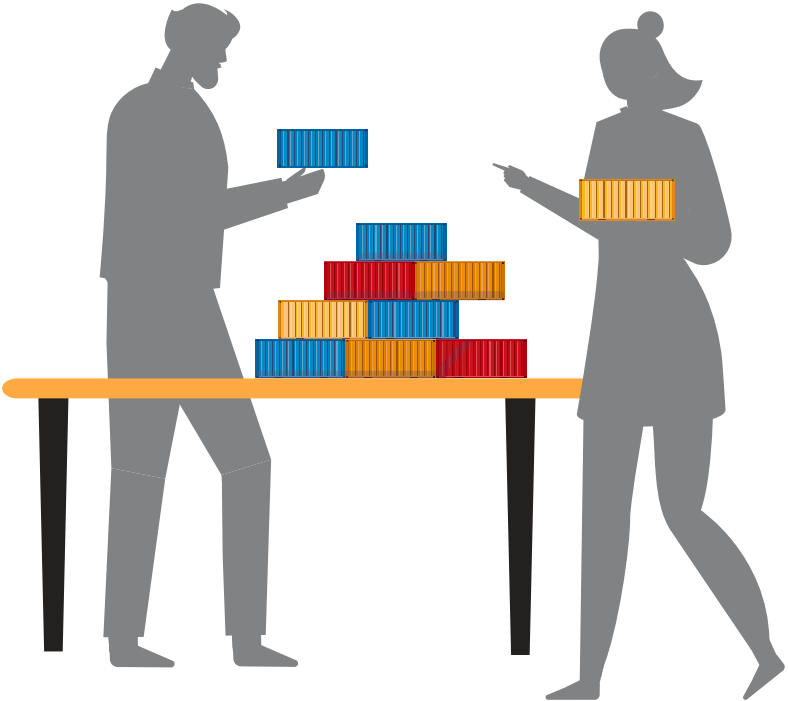
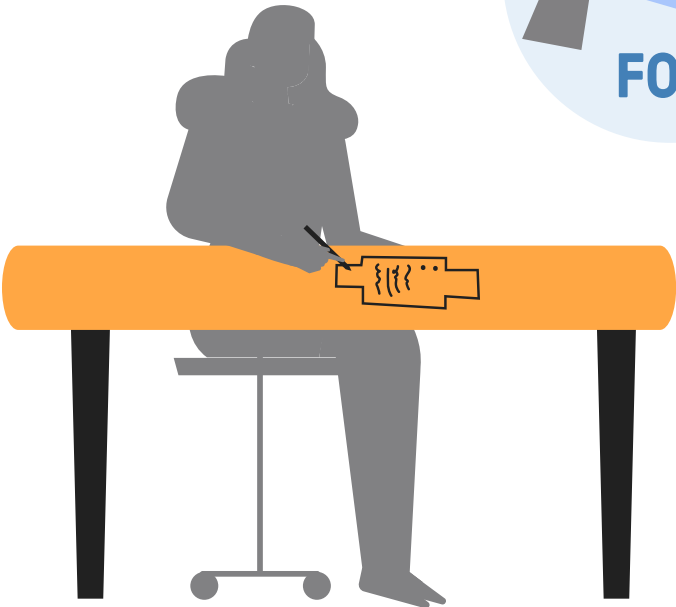
STEP 1:

Fill out answers to questions, then fold paper into container shape.



STEP 2:

Stack your mini shipping container response on the table. See what others have said about the waterfront.



Visit stations 2-5 at your own pace, any order

STATION 5

What Would You Like to Do at the Waterfront in the Future?

Envision your ideal visit to the waterfront

STEP 1:

Use waterfront map to learn types of activities and places.



- ARTS, CULTURE, & EVENTS
- HISTORY, SCIENCE, & NATURE
- RESTAURANTS & SHOPPING
- TROLLEY & WATER TAXI
- CRUISES & BOAT TOURS
- PARKS, RECREATION, & EXERCISE
- MARINAS & PUBLIC DOCKS
- PROMENADE AMENITIES
- OTHER ACTIVITIES

STEP 2:

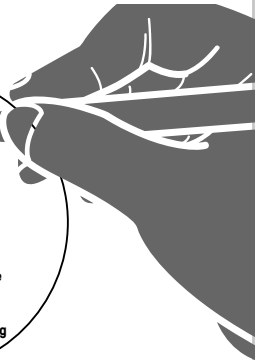
Select category that you want to see improvements.



ARTS, CULTURE, & EVENTS



- ☐ See outdoor public art
- ☒ Visit art galleries or interactive art installations
- ☐ Learn about local indigenous culture
- ☐ Attend live performance
- ☐ Host or attend a private event, such as a wedding or other celebration



STEP 3:

Place token into nets on large wall graphic.



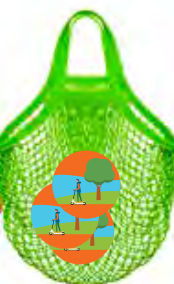
SCIENCE & NATURE



PARKS



ARTS, CULTURE, & EVENTS



Visit stations 2-5 at your own pace, any order

FEEDBACK ACTIVITY STATION LEADS

WE WANT TO
HEAR FROM
YOU!!

STATION 1

STATION 2

STATION 3

STATION 4

STATION 5



Jana Wehby



Gerdo Aquino



Ying-yu Hung



Yanhao Chai



Val Clarke

Look for
yellow nametags
for help at the activity stations

RAFFLE TIME!